



Higher in the sky,
a towering Hallmark.



Hallmark
PINNACLE
@ Pati, Off Kollur

TS RERA REG.
NO. P01100004147

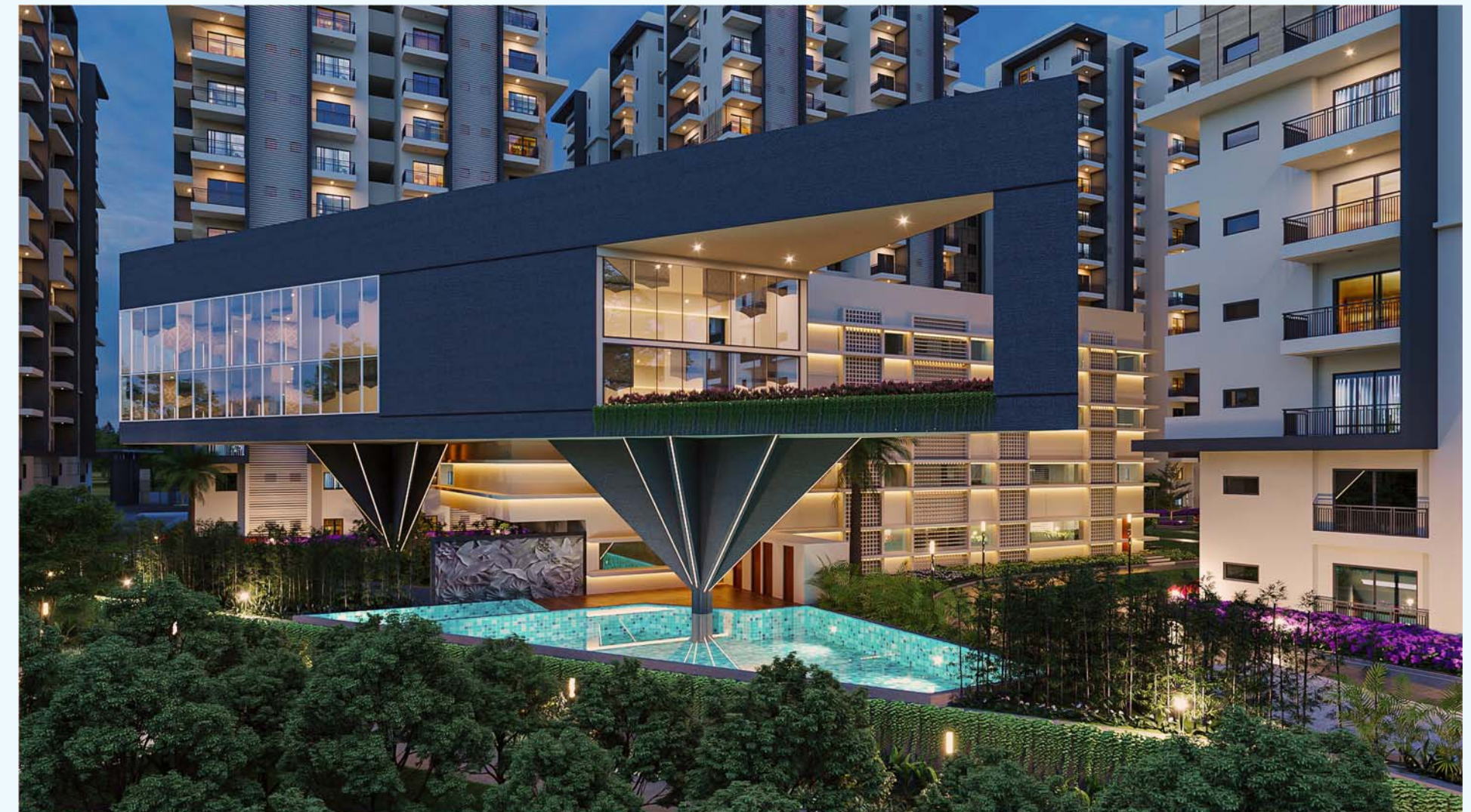
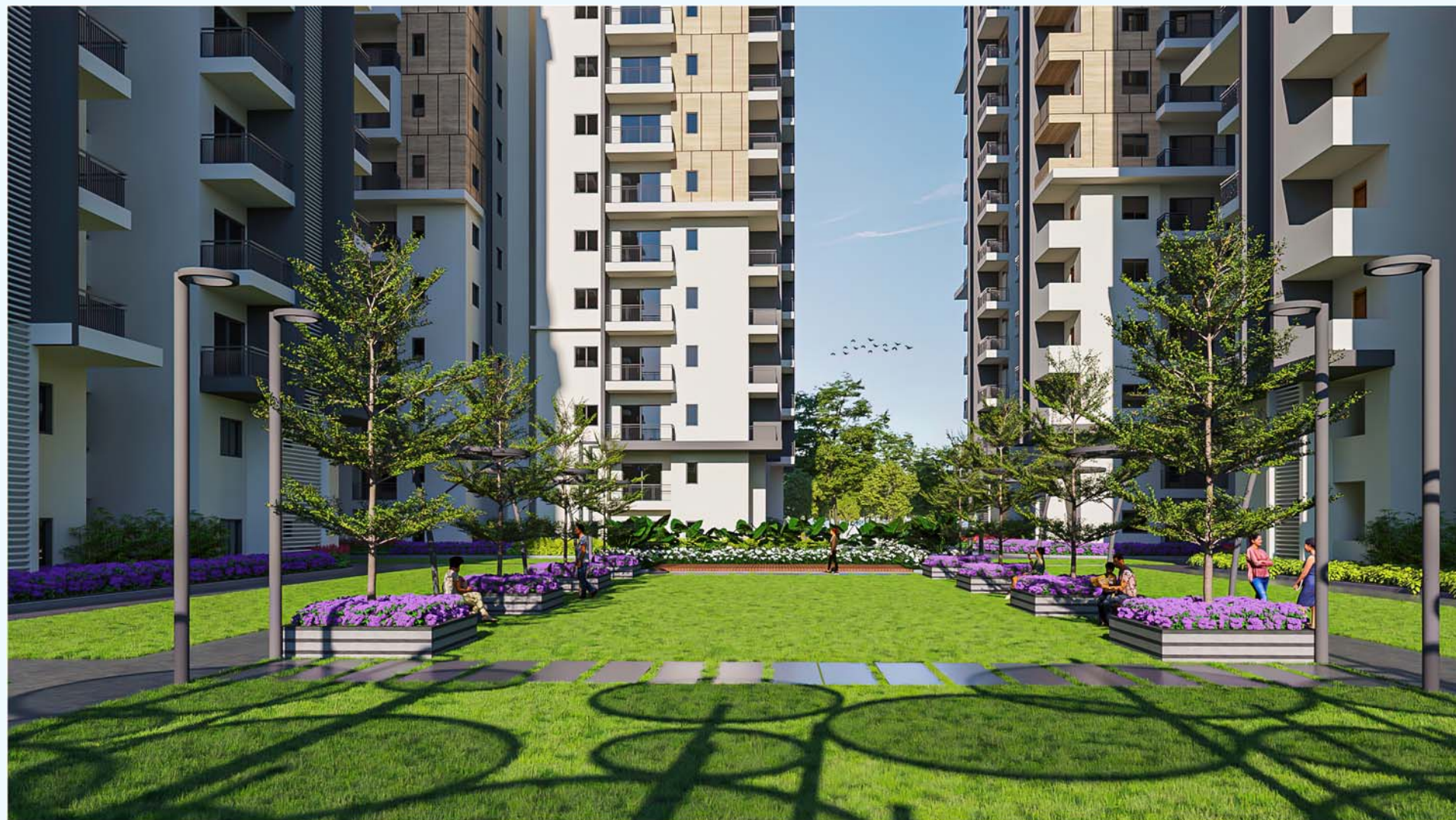
For a new high in new-age living.

Hallmark Pinnacle for new-age living in high-rise gated community in the most happening IT corridor.

- 7.14**
Acres
Total Units 798
- G+14**
Floors
- 8 Blocks**
2 Level
Cellar Parking
- 3 & 2 BHK**
Flats
- Unit Sizes**
Between
1240-1885
sq. ft.
- 28,000**
sq. ft. Clubhouse
with world-class
facilities

Ultra-modern Facilities and amenities in Clubhouse Zone

- Banquet Hall with Green Rooms • Mini Banquet Hall • Preview Theater
- Super Market • Swimming Pool • Indoor Games • Creche • Saloon/Spa • GYM
- Conference Room with Admin Office • Badminton Court • Squash Court • Yoga • Café
- Guest Rooms • Work From Home Zone • Library • Laundry Room





L E G E N D

- | | |
|--------------------------|------------------------|
| 1. Entry Gateway | 11. Clustered Trees |
| 2. Tennis Court | 12. Amphitheatre |
| 3. Basketball Court | 13. Elder's Park |
| 4. Seating Plaza | 14. Pedestrian Pathway |
| 5. Clubhouse | 15. Driveway |
| 6. Plaza with Pavilion | 16. Grass Pavers |
| 7. Party Lawn | 17. Entry Lobby |
| 8. Swimming Pool | 18. Pedestrian Ramp |
| 9. Kids Pool | 19. Transformer Yard |
| 10. Children's Play Area | 20. Road Landscape |

BLOCK - C & H

Flat No.	Flat Type	Facing	Typical Flat Area	GF & 1 st Floor Flat Area
Flat 1, 7	3 BHK	West	1700 Sft	1520 Sft
Flat 2, 8	3 BHK	East	1885 Sft	1680 Sft
Flat 3, 5	2 BHK	West	1285 Sft	1240 Sft
Flat 4, 6	3 BHK	East	1585 Sft	1520 Sft

BLOCK - D

Flat No.	Flat Type	Facing	Typical Flat Area	GF & 1 st Floor Flat Area
Flat 1	3 BHK	East	1885 Sft	1680 Sft
Flat 2	2 BHK	West	1285 Sft	1240 Sft
Flat 3	3 BHK	East	1585 Sft	1520 Sft
Flat 4	3 BHK	West	1700 Sft	1520 Sft
Flat 5	3 BHK	East	1700 Sft	1520 Sft

BLOCK - E

Flat No.	Flat Type	Facing	Typical Flat Area	GF & 1 st Floor Flat Area
Flat 1, 7	3 BHK	West	1885 Sft	1680 Sft
Flat 2	3 BHK	East	1885 Sft	1680 Sft
Flat 3, 5	2BHK	West	1285 Sft	1240 Sft
Flat 4, 6	2 BHK	East	1285 Sft	1240 Sft

BLOCK - F & G

Flat No.	Flat Type	Facing	Typical Flat Area	GF & 1 st Floor Flat Area
Flat 1, 5	3 BHK	West	1700 Sft	1520 Sft
Flat 2, 6	3 BHK	East	1700 Sft	1520 Sft
Flat 3	2 BHK	West	1285 Sft	1240 Sft
Flat 4	3 BHK	East	1585 Sft	1520 Sft



Scan to download floor plans and individual flat sizes

Area Statement

Ground, First and Typical Floor

BLOCK - A

Flat No.	Flat Type	Facing	Typical Flat Area	GF & 1 st Floor Flat Area
Flat 1, 3	2 BHK	West	1285 Sft	1240 Sft
Flat 2, 6	3 BHK	East	1700 Sft	1520 Sft
Flat 4	3 BHK	East	1585 Sft	1520 Sft
Flat 5	3 BHK	West	1885 Sft	1680 Sft

BLOCK - B

Flat No.	Flat Type	Facing	Typical Flat Area	GF & 1 st Floor Flat Area
Flat 1	3 BHK	West	1885 Sft	1680 Sft
Flat 2, 8	3 BHK	East	1700 Sft	1520 Sft
Flat 3, 5	2 BHK	West	1285 Sft	1240 Sft
Flat 4	2 BHK	East	1285 Sft	1240 Sft
Flat 6	3 BHK	East	1585 Sft	1520 Sft
Flat 7	3 BHK	West	1700 Sft	1520 Sft

Disclaimer: Tolerance of + / - 2% is possible in the unit areas on account of design and constructions variances. | * Ground Floor Lobby



East-facing
1885 Sft | 3 BHK



East-facing Corner
1885 Sft | 3 BHK



East-facing | 1885 Sft | 3 BHK



East-facing Corner | 1885 Sft | 3 BHK

East-facing
1700 Sft | 3 BHK



East-facing Corner
1700 Sft | 3 BHK



East-facing | 1700 Sft | 3 BHK



East-facing Corner | 1700 Sft | 3 BHK



West-facing | 1885 Sft | 3 BHK



West-facing Corner | 1885 Sft | 3 BHK



West-facing | 1700 Sft | 3 BHK



West-facing Corner | 1700 Sft | 3 BHK

East-facing
1585 Sft | 3 BHK



East-facing | 1585 Sft | 3 BHK

THE GOOD REASON

Affordable, yet a luxury residential project designed for new-age living

Close to rapidly growing residential pocket of Kollur

15 to 20 min drive to Financial District

Desired location for people preferring to live away from the hustling city life

New-age educational institutions, infotainment centres and malls close by



West-facing | 1285 Sft | 2 BHK



West-facing Corner | 1285 Sft | 2 BHK

East-facing
1285 Sft | 2 BHK



West-facing Corner
1285 Sft | 2 BHK

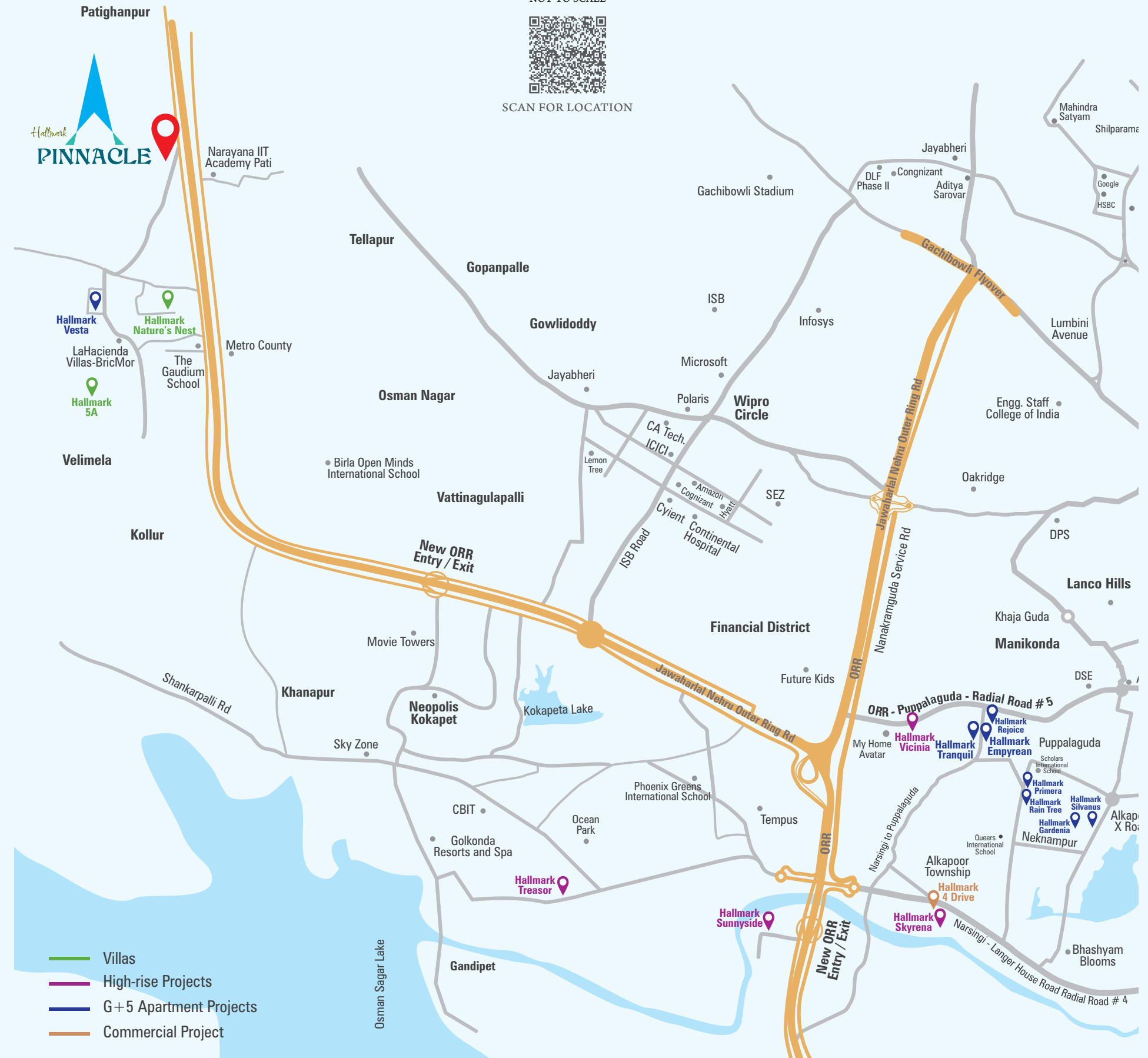


LOCATION MAP

NOT TO SCALE



SCAN FOR LOCATION





84 Luxury Flats @ Alkapoor Township



240 Premium Flats @ Nekkampur



245 Premium Flats @ Puppalaguda



441 Luxury Flats @ Puppalaguda



G+9 Floors Luxury Apartments in 5.7 acres @ Manchirevula



Milestones when we begin. Landmarks when we complete.

Hallmark Builders has created a repertoire of homes and hallmarks. What you see here is a legion of completed, ongoing, and proposed-new projects that showcase the commitment of Hallmark. We've always been here for creating homes and oodles of happiness for diverse segments of home-seekers - and Hallmark Skyrena is yet another. With a slew of projects, we expect to add new shades of life to living.



Proposed Lavish Gated Villa Residential Project in 47 acres @ Pati close to Kollur exit



G+5 Floors Luxury Apartment Project in 3 acres @ Pati, off Kollur



Ultra-modern Boutique Villas in 5.37 acres @ Pati, off Kollur



Ultra-Modern G+14 Residential Project in 6.9 acres @ Narsingi



Ultra-modern G+29 Floor High-rise Towers in 4.62 acres @ Narsingi, off Kokapet



Proposed Ultra-luxury Gated Villa Project in 16 acres @ Pati close to Kollur exit



HALLMARK PINNACLE PROJECT
TS RERA REG. NO. P01100004147

Member
CREDAI
www.credai.org